

Hydraulic Jack Type A3-WH

The high quality hydraulic cylinder is equipped with a big foot plate for safe stand. The pump lever mechanism works freely, driven by a detachable-collapsible lever with slot-shaped top for use at the release valve making transportation and storage a simple procedure. The jack top has a corrugated surface and a thread for fine adjustment of height. The piston has an overload safety device. A3-WH is suitable for automotive and industrial applications.

TYP	Capacity t	Lifting height mm	Min./Max. height mm	Weight kg	Order No.
A3-WH2	2	90	158 – 308	2.5	K00001
A3-WH3	3	125	195 – 380	3.5	K00002
A3-WH5	5	125	197 – 402	4.5	K00003
A3-WH8	8	125	205 – 410	5.5	K00004
A3-WH12	12	125	214 – 420	7.5	K00005
A3-WH15	15	140	225 – 445	8.5	K00006
A3-WH20	20	145	244 – 469	12	K00007
A3-WH32	32	150	295 – 490	16	K00008
A3-WH50	50	180	310 – 495	33	K00009

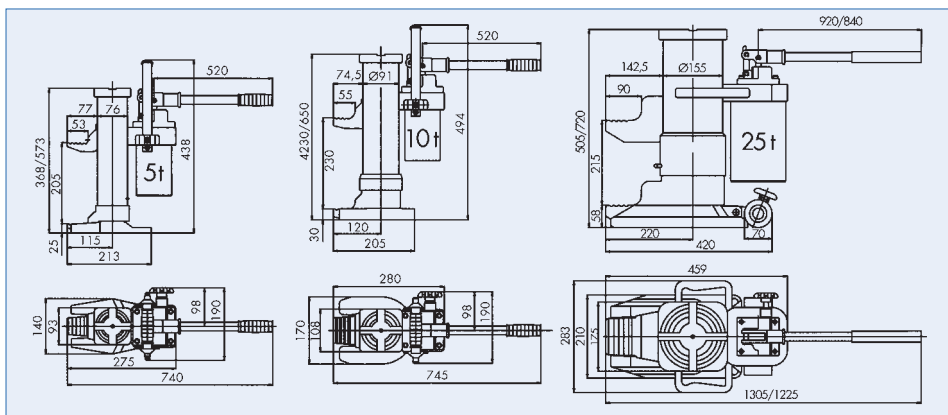


A3-WH

Hydraulic Jack Type HM

PLANETA hydraulic jacks for repairs, maintenance and installation of heavy machines.

- Compact and stable construction
- Can be used in any position
- Housing revolves 360 degrees
- Protected against overload
- According to CE and US standard USA ASME/ANSI B 30/1.1986
- Lowering speed can be accurately adjusted
- Pump lever is removable



TYPE	Capacity t	Lift of claw mm	Lift of head mm	Max. lever force kg	Weight kg	Order No.
HM 5	5	25 - 230	368 - 573	38	25	K00021
HM 10	10	30 - 260	420 - 650	40	35	K00022
HM 25	25	58 - 273	505 - 720	40	102	K00023

